

Key to cable colors

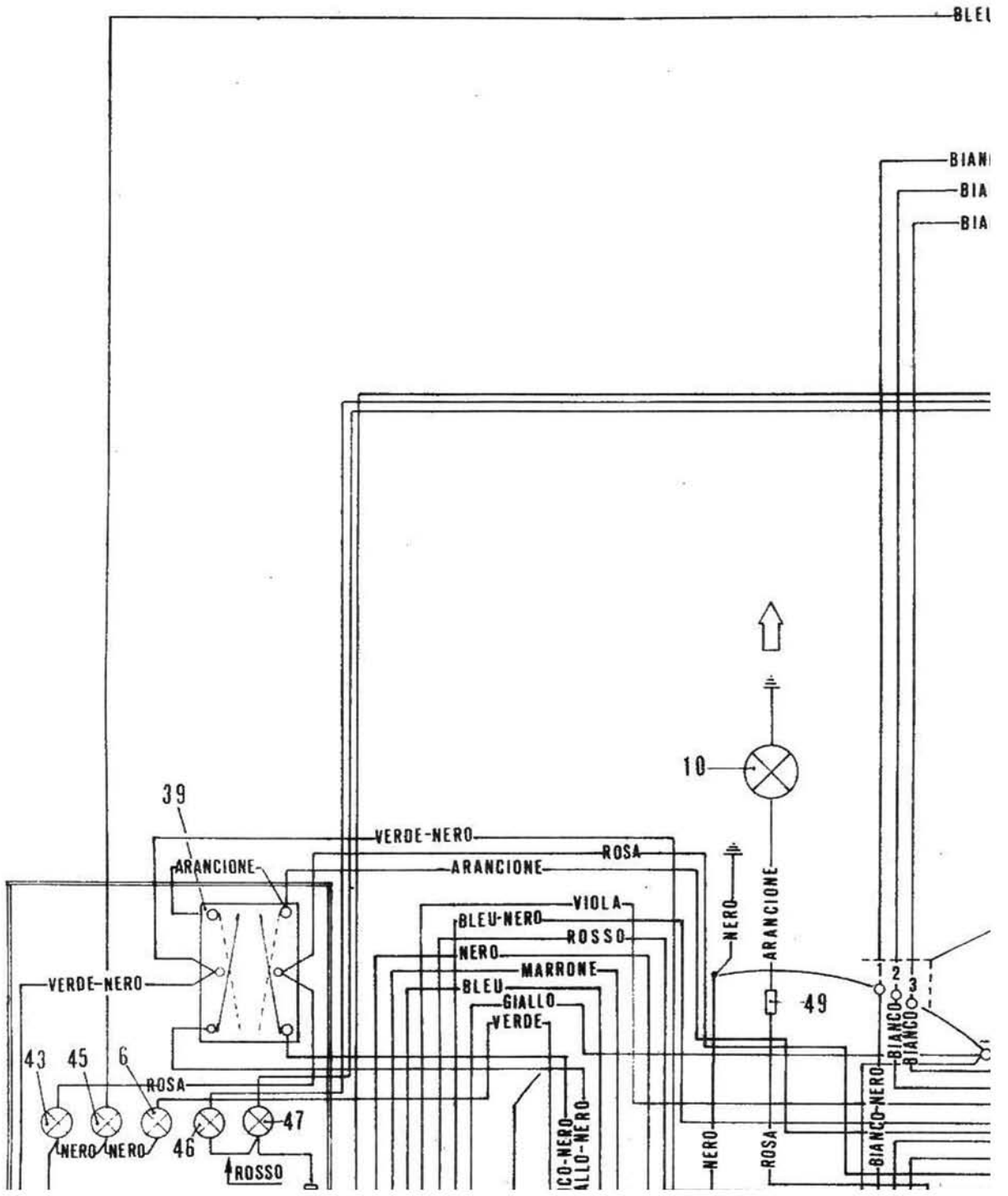
Nero		Black
Bianco		White
Verde		Green
Grigio		Grey
Viola		Violet
Arancio		Orange
Rosa		Pink
Rossa		Red
Marrone		Brown
Giallo		Yellow
Azzurro		Blue

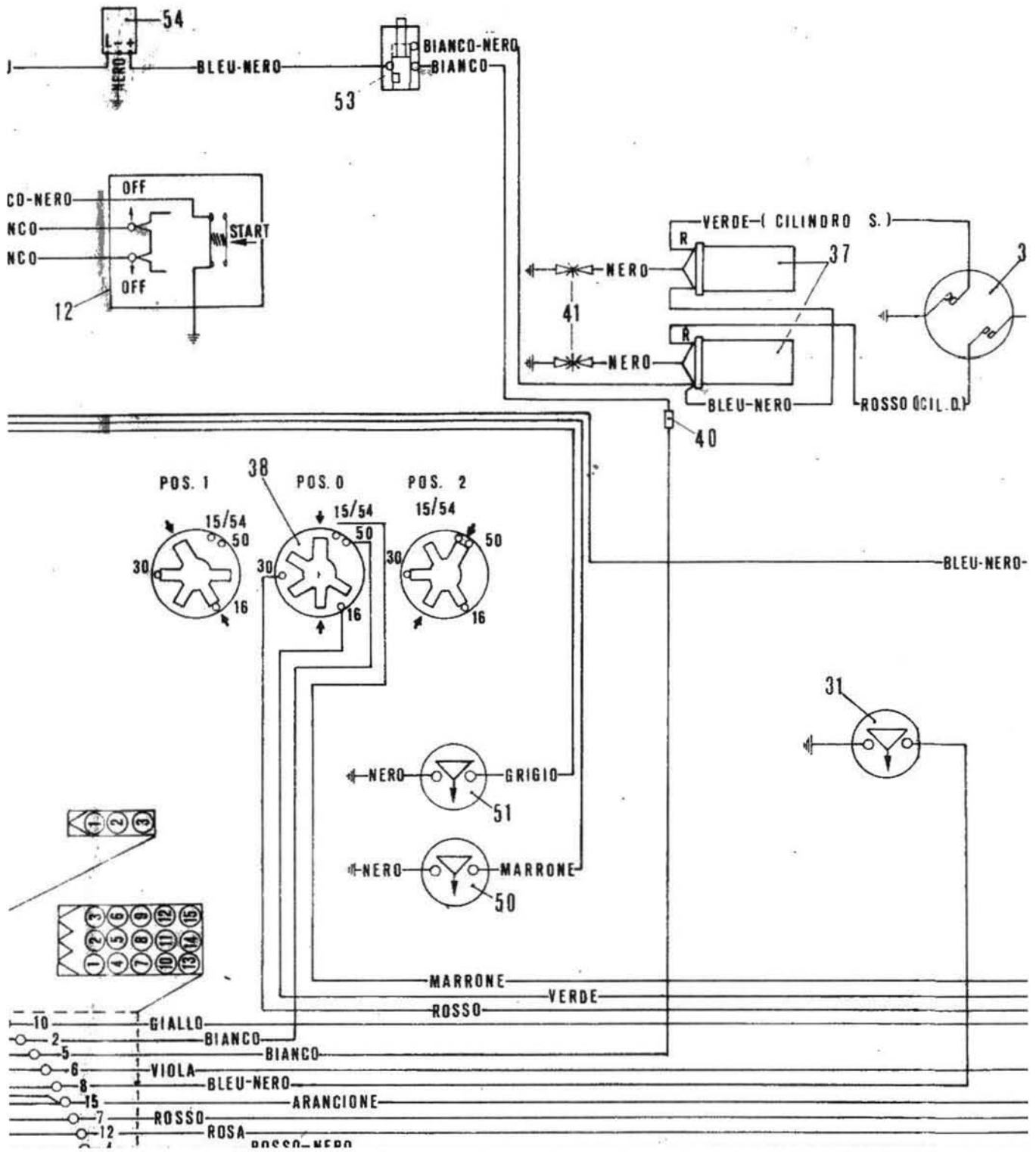
Rosso/Nero		Red/Black
Azzurro/Nero		Blue/Black
Verde/Nero		Green/Black
Bianco/Nero		White/Black
Giallo/Nero		Yellow/Black
Grigio/Nero		Grey/Black
Grigio/Rosso		Grey/Red

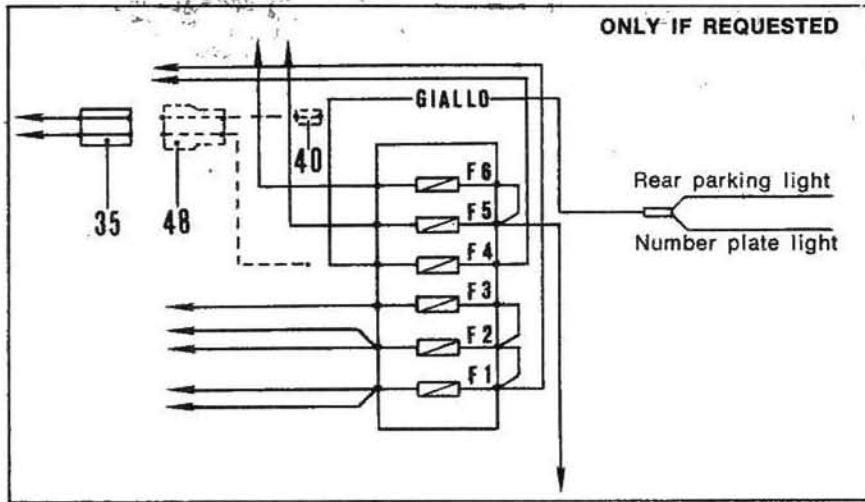
Legend

1	Mile counter, speedometer (bulb 3W)
2	Additional light (bulb 5W) - only on request
3	High beam warning light (bulb 1,2W) «H»
4	Oil pressure warning light (bulb 1,2W) «Oil»
5	Neutral position warning light (bulb 1,2W) «N»
6	Low beam and parking warning light (bulb 1,2W) «L»
7	Generator charge warning light (bulb 1,2W) «Gen»
8	Low beam (bulb 40W)
9	High beam (bulb 45W)
10	Turn indicator light - right, front (bulb 21W)
11	Turn indicator light - left, front (bulb 21W)
12	Engine starting and stopping control
13	Additional light switch
14	Control: Turn indicator lights, horns, flashing. lights
15	Horns (Consumption: 7A)
16	Front brake switch
17	Flashing light (Flash) relay
18	Rear brake switch
19	Battery
20	Regulator

21	Rectifier
22	Alternator
23	Starter motor relay
24	Starter motor
25	Switch on clutch control wire
26	Turn indicator light - left, rear (bulb 21W)
27	Rear stop light (bulbs 5/21 W)
28	Number plate light (bulb 5W)
29	Turn indicator light (bulb 21W) left, rear
30	Turn indicator lights, flasher unit
31	Oil pressure switch (on the engine crankcase)
33	Terminal block with fuses (16A fuses)
34	3-way connector
35	4-way connector (Amp)
36	Breaker
37	Coils
38	Ignition switch (3 positions)
39	Switch actuating rear turn indicator lights flashing
40	2-way connector
41	Spark plugs
42	Light switch with travel limit from position «High/Low beam» to position «Town driving light»
43	Right turn indicator warning light (bulb 1,2W)
44	Left turn indicator warning light (bulb. 1,2W)
45	Warning light indicating «Side Stand» in position «Park» (bulb 1,2W)
46	Brake fluid level warning light «Brake» (bulb 1,2W)
47	Fuel level warning light «Fuel» (bulb 1,2W)
48	4-way connector (Amp)
49	Connection
50	Brake fluid level indicator
51	Fuel level indicator
52	Electrovalve (2,5W)
53	Coil control device
54	Commutator for side stand warning light «Park» position
55	Rear parking light (bulb 5/21W)







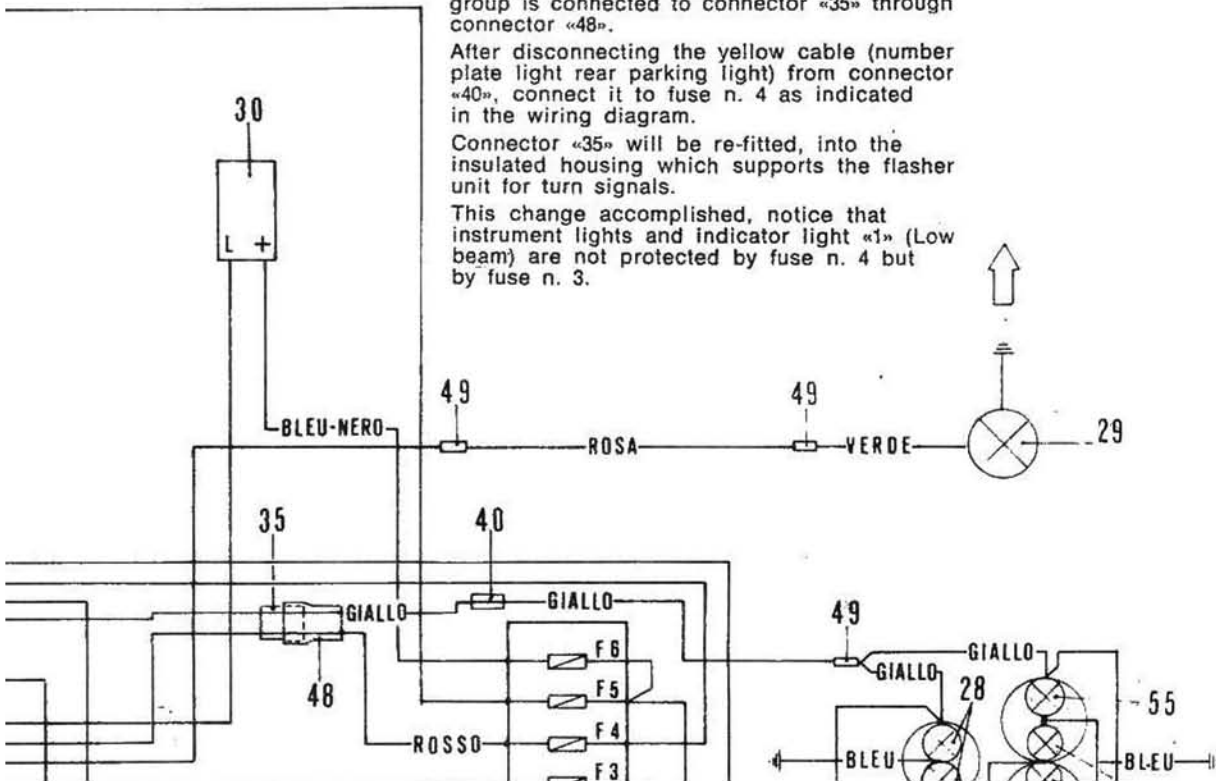
CHANGING THE WIRING DIAGRAM FOR VEHICLES WITH COMPULSORY LIGHTING ON, WHEN STARTING THE ENGINE.

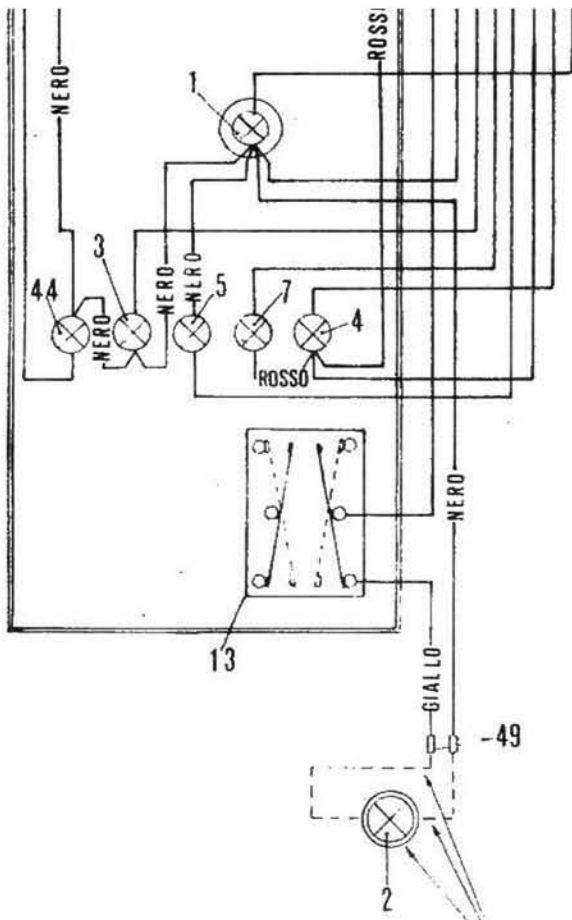
To achieve this change it is necessary to take off the wire group which connects connector «35» to fuse n. 4 (red cable) and to connection «40» (yellow cable). This wire group is connected to connector «35» through connector «48».

After disconnecting the yellow cable (number plate light rear parking light) from connector «40», connect it to fuse n. 4 as indicated in the wiring diagram.

Connector «35» will be re-fitted, into the insulated housing which supports the flasher unit for turn signals.

This change accomplished, notice that instrument lights and indicator light «1» (Low beam) are not protected by fuse n. 4 but by fuse n. 3.





FORNITI SOLO SU RICHIESTA

